



<https://nettechindia.com/>



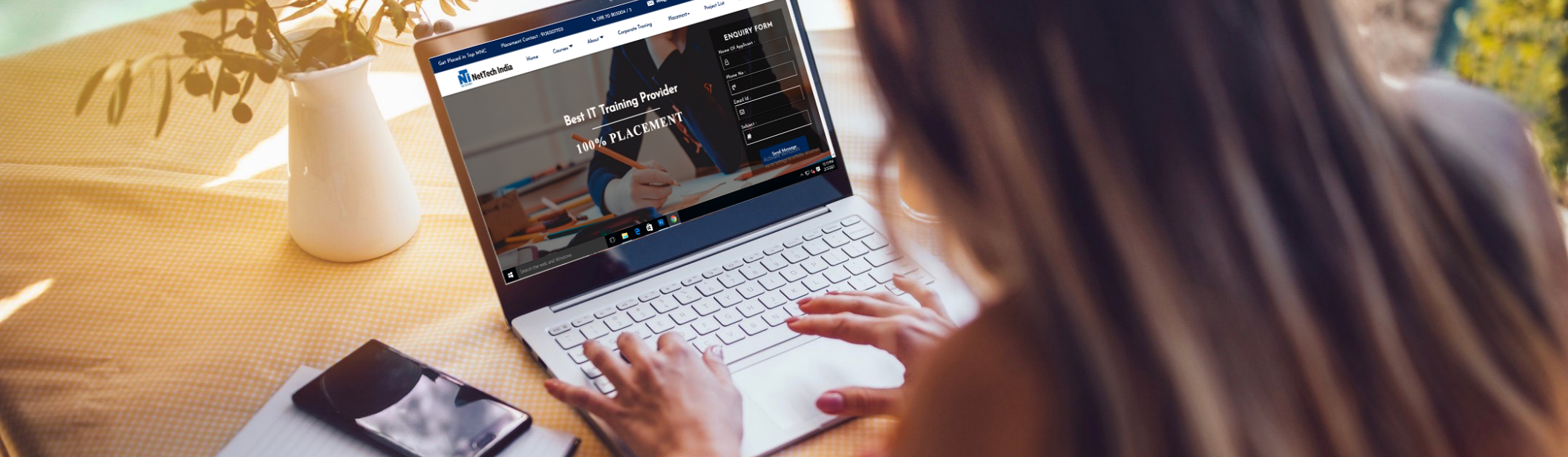
info@nettechindia.com



9870803004/5

ROBOTIC PROCESS AUTOMATION CERTIFICATION





ABOUT US

NetTech India Training Institute offers a high-quality learning experience in the field of IT training to train students on brand new technologies and train them to deliver the desired results with commercially relevant and re-organized technical skills.

The probability of achieving your dream job will keep on increasing day by day once you complete a course in NetTech India. We also focus on improving soft skills in terms of communication, leadership, teamwork, external appearance, and attitude which helps everyone to be professional in all the aspects of their career.



25%
Theory

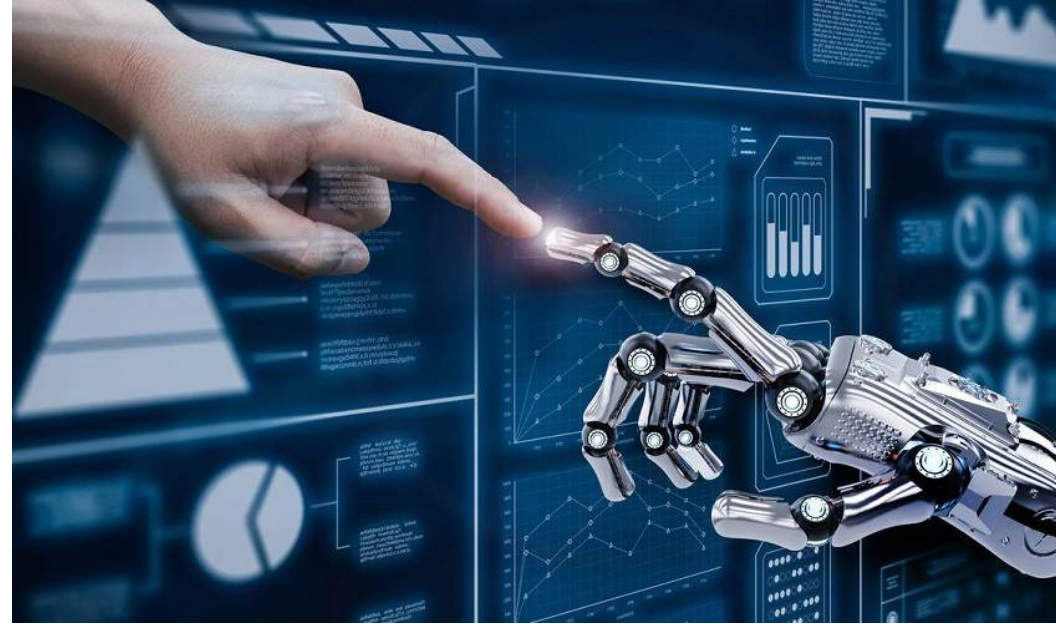


75%
Practicals

<https://nettechindia.com/>

ABOUT RPA

If you are not learning about this technology, you are lagging far behind. The robots are substituting the blue-collar jobs including industrial. Sooner or later you may find yourself in danger, enrolling yourself in this job can help you to thrive and adapt to this new-age technology. These robots are the new-generation technology and will help you to master automation and build software robots.



BENEFITS OF RPA

- ➔ Career Growth - Higher Pay & Position
- ➔ Encourages professional development
- ➔ Enriches self-image and reputation
- ➔ Enhances professional credibility.
- ➔ Abundant Job Opportunities
- ➔ Used In Many Industries
- ➔ Global Recognition
- ➔ Secure and Flexible
- ➔ 150+ Case Studies
- ➔ 50+ Projects



COURSE CONTENT

1. Introduction to RPA(Robotic process Automation)

- • What is RPA?
- • Google trend report on RPA and Openspan, Pega robotics
- • What is the scope of this RPA course?
- • Why do we need RPA?
- • Will RPA cut jobs?
- • Is RPA Hype or is it Real?
- • Where does Pega robotics stand (Compared to other competitors)?
- • Google trend report on Competitors and comparison
- • Naukri and Monster job openings
- • Salary report from Indeed & Payscale
- • RPA vs AI
- • A walkthrough of the course content.

2. What is Openspan

- Short Openspan Demo with a Real-time Project
- Navigation
- What is the scope of Openspan Training
- Important options and Shortcuts in the tool
- Types of Tools in Openspan (Walkthrough)
- What's the Architecture, SOA, Client-server or Cloud
- Openspan Cloud?

3. Installation of Openspan

- Supported Systems (Is Windows, Linux, Mac supported)
- What is the Alternative if it's not Supported(Virtualbox)
- Supported Databases
- Integration with other tools.

4. Modules in Openspan

- Windows Integration
- Interaction Framework
- Web Integration
- Project Deployment
- Diagnostics and Debugging

5. Windows Integration

- Getting Started with Studio
- Recommended for Solution Building
- Developing Open Span Solutions and Projects
- Defining Windows Adapter Design Properties
- Working with the Windows Adapter
- Recommended for Solution Development
- Working with Open Span Automations
- Working with MDI Child Windows

6. Interaction Framework

- Working with Interaction Framework
- Working with Activities and Active MDI Windows

7. Web Integration

- Defining Web Adapter Properties
- Defining Events and Methods
- Using the Web Adapter
- Interrogating a Web Application
- Working with Web Adapter Match Rules
- Automating the Training Web Site

8. Agile Desktop and Deployment

- Using the Agile Desktop Framework
- Building Project Files
- Deploying Open Span Solutions
- Using Configuration Project Items
- Using Open Span Management Console

9. Diagnostics and Debugging

- Debugging Open Span Projects
- Using Studio's Diagnostics Publishers
- Handling Errors

10. CanopY project in RPA

- Project Overview
- How to configure an End to end real-time project.
- Project Guidance
- Project Submission and Verification

11. Mock Interviews with Questions and Answers Discussion

- Functional Q&A
- Technical Q&A
- Project Q&A (For Multiple Domains like Banking, Retail, Insurance, E-commerce, etc)
- Question for Freshers and Experienced (How do they differ?)
- How to justify if the resource is not certified.

12. Certification Preparation Session

- How difficult is it to clear the certifications
- Levels of certification
- How to register for them(Technical details)
- Can I apply for certification if my company is not a partner
- If not, what is the alternative
- Certification Mock Q&A discussion

13. Resume Preparation Help

- What's the Best resume
- What if my resume is the worst
- How to prepare a great resume
- Should I be on LinkedIn, Of course, Yes
- Providing Photo, Facebook, LinkedIn, Twitter Links in a Resume
- Create Blog, Quora, Stackexchange, etc, and provide the links in resume.
- SEO in Naukri (how to be on the Top)
- Creating Multiple Profiles in case you need a job urgently(Naukri loophole)
- Floating your resume in Monster, indeed, Shine, etc.
- How to Search for Job providers and jobs in LinkedIn
- Aggressive Follow, that's what counts

And Many More...



WHO CAN LEARN ?

- Anyone who wants to build a career in RPA
- Anyone interested in gaining knowledge about it.
- Students who are currently in college or university

CAREER OPPORTUNITIES

- RPA developer
- Senior RPA developer
- RPA process architect
- RPA developer - senior consultant
- RPA project manager
- RPA lead developer

And Many More...

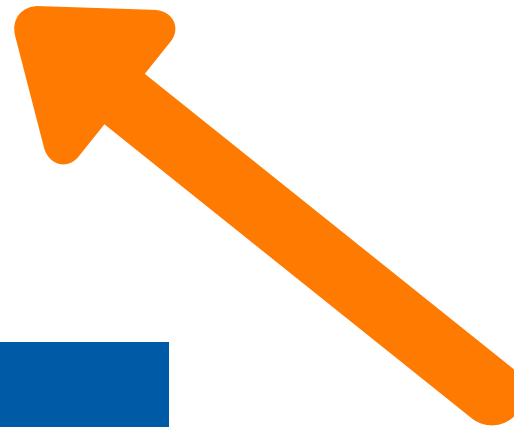


PROCESS FOR **SUCCESS**

GET PLACED

GET TRAINED

ENROLL



FACILITIES OFFERED

- ➔ Practical Training on Live Projects
- ➔ 100% Placement Guarantee
- ➔ Interview Preparation
- ➔ Global Certification
- ➔ Fully functional labs
- ➔ Online / Offline Training
- ➔ Study Materials
- ➔ Expert level industry recognized training





NetTech India



203, Ratnamani Building,
Dada Patil Wadi, Opp ICICI ATM,
Near Platform No.1 Thane,
Maharashtra 400601

9870803004/5



info@nettechindia.com



<https://www.nettechindia.com>

